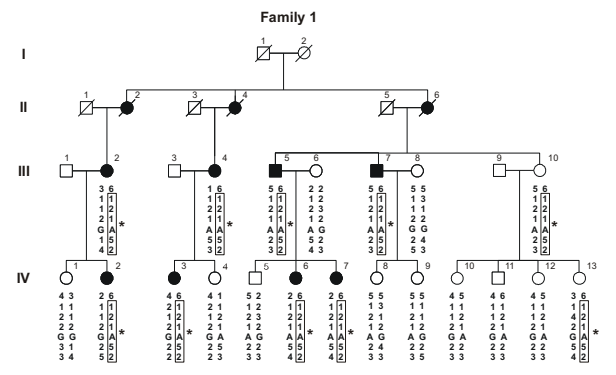


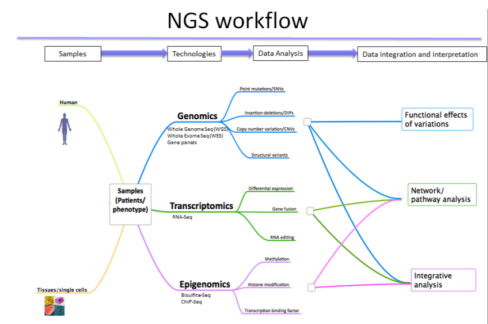
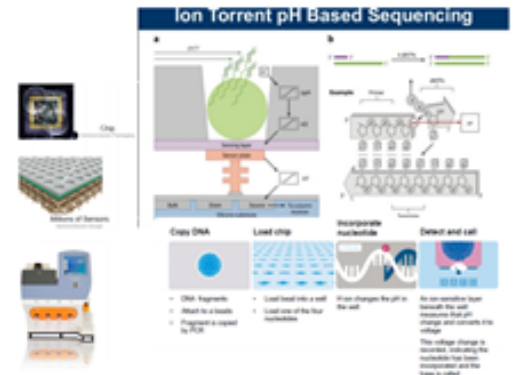
## Gene Mapping: Linkage analysis

Parametric statistical analysis using molecular markers (STRs, SNPs array) to identify novel loci/genes associated to neuropathological phenotypes



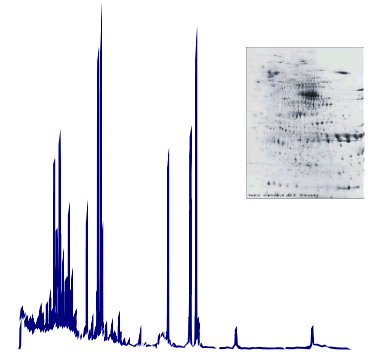
## Next Generation Sequencing

Custom panel exome, RNA and ChIP sequencing



## Biomarker Discovery

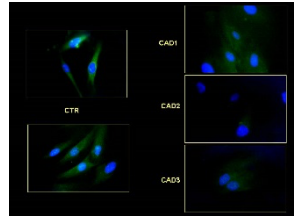
Mass Spectrometry



TB4 up in CSF sCJD

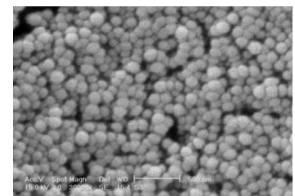
## Functional Analysis

Immunofluorescence Microscopy

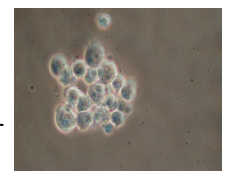
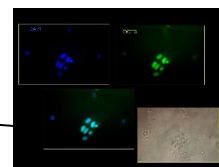


Notch3 down in CADASIL fibroblasts

Drug Discovery Nanoparticles



iPSC generation



Neuronal differentiation

iPSC

EBV Lymphocyte immortalized